

October 2019

Media

Boating Industry Canada E-News
Boating Industry Canada Online
Marina Life Magazine
Multihulls Online (EU)
Passage Maker (YouTube)
Powerboat and Rib Magazine
Powerboat and Rib Online

Context

DockControl Software Solution
DockControl Software Solution
Wireless Docking Controllers
DockControl Groundbreaking Software Solution
Worry Free Docking at Trawler Fest
Dockmate in Boat Tech
Next-Gen Wireless Remote in Equipment

Links

Newsletter
[Link](#)
Print
[Link](#)
[Link](#)
Print
[Link](#)

**FLEXIBLE FINANCING.
AND A FRIENDLY FACE.**



Message From The Editor



Big Advances, Tough Choices

By the time you read this on Tuesday morning, the marine industry will be sitting down to the IBEX Industry Breakfast and several presentations including the announcements of the 2019 IBEX Innovation Awards.

I'm honored to have been one of the judges this year and we have spent this past weekend evaluating the 106 entries; a record number. There are some brilliant ideas and some very impressive advances, and this leaves the judges tough choices.

The most challenging Category for me was "Electrical Systems" which includes AC / DC onboard and shore power systems, batteries, chargers, control apparatus and more. There were 14 entries in this one category and they represented a lot of innovation and design and function for us to evaluate.

Audio Systems was another one that was challenging - for many entries, I felt that you really needed to hear these systems perform. Anyway, I went through all 106 of them and met the people behind each one.

Of course, I can't reveal the winners ahead of this morning's IBEX Industry Breakfast awards presentations, so I'll ask you to watch for the winners to be announced in next week's Boating Industry Canada News Week. There will be lots to keep you interested!

Andy Adams, Editor

aadams@kerrwil.com



is bringing the best to Canada.



902-928-1900 | info@stright-mackay.com | stright-mackay.com

Feature

CANADIAN YACHTING AND PACIFIC YACHTING TO COLLABORATE ON TORONTO AND VANCOUVER BOAT SHOW GUIDES



Canadian Yachting and Pacific Yachting to collaborate in 2020. Canadian Boat Shows has announced AD ASTRA Media Inc. as the official publisher for the 2020 Toronto and Vancouver International Show Guides. "We are thrilled to be working with Ad Astra again and know the evolving digital enhancements of the show guides... [Read More](#)

Product Focus

DOCKMATE LAUNCHES GROUNDBREAKING DOCKCONTROL SOFTWARE SOLUTION



US-based Seller of Wireless Remote Controls Offers Certified Installers Unprecedented Customization Capabilities. Dockmate® U.S., which offers advanced handheld wireless remote controls for boats, has announced DockControl software for the ultimate in remote control customizability. [Read More](#)

SHAKESPEARE STREAM WIRELESS INTERNET BOOSTER ENTERED IN IBEX 2019 INNOVATION AWARDS



With the new Shakespeare Stream Wireless Internet Booster, you can stop struggling with slow Wi-Fi at the dock or spotty cellular service* on the water. Stream uses Shakespeare's state-of-the-art marine cellular booster technology to amplify weak cell signals along inshore, coastal and popular cruising routes... [Read More](#)

VHF-REIMAGINED - VESPER MARINE ANNOUNCES CORTEX



Announcing the World's First Marine VHF Radio with Touchscreen Handsets, Integrated SOTDMA smartAIS Transponder and Remote Vessel Monitoring. Vesper Marine, a leading manufacturer of innovative marine electronics, has announced a revolution in marine VHF with the release of Cortex. [Read More](#)

**KROPF** CONCRETE AQUACULTURE MARINE
MARINE



FLOATING DOCK SYSTEMS
The Proven Solution

CLICK FOR WEBSITE

Request More Information

**METS**
TRADE
MARINE
EQUIPMENT
TRADE
SHOW



19 - 20 - 21 NOVEMBER 2019
RAI AMSTERDAM
Get your free ticket NOW

Request More Information

Product Focus

AKZONOBEL'S NEW AWLGRIP SINGLE-STAGE TOPCOAT MAKES LIFE A BREEZE FOR YACHT OWNERS



Navigating the process of yacht care and maintenance just got a whole lot easier, following the launch of Awlgrip HDT (High Definition Technology), a new single-stage repairable topcoat from AkzoNobel. Creating a new standard in topcoat appearance and durability, Awlgrip HDT is a high performance, mirror-like single-stage coating... [Read More](#)



You are here: [Home](#) ▸ [Marine Products](#) ▸
DOCKMATE LAUNCHES GROUNDBREAKING DOCKCONTROL SOFTWARE SOLUTION

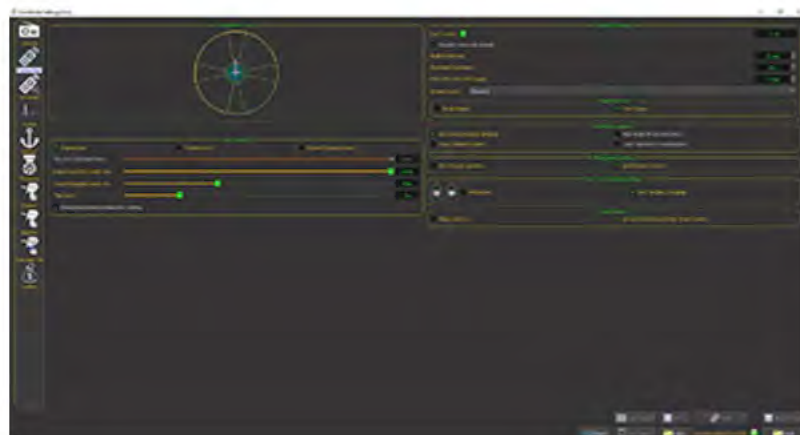
DOCKMATE LAUNCHES GROUNDBREAKING DOCKCONTROL SOFTWARE SOLUTION



Print

Email

Oct 1, 2019



US-based Seller of Wireless Remote Controls Offers Certified Installers Unprecedented Customization Capabilities

Dockmate® U.S., which offers advanced handheld wireless remote controls for boats, has announced DockControl software for the ultimate in remote control customizability. Dockmate when combined with the DockControl software solution offers customers an off-the-shelf remote control solution that can be tailored to the real-world capabilities of their vessel and their own boating style.

DockControl gives the installer the ability to program the remote control by choosing any combination of engine(s) and thruster(s) activation(s). It allows for adjusting the sensitivity and behavior of the Dockmate TWIST

joystick, choosing which functions are activated by each joystick direction and even adjust the size of the joystick's dead-zone to avoid accidental activation.

"Aftermarket remote controls offer unprecedented flexibility to boaters wanting a safer and easier maneuvering experience," said Brian Sheehan, Dockmate U.S. spokesperson. "The problem is that every boat performs just a little differently and every boater drives their boat in a different way. While other solutions force you to adapt your style to a one-size fits most solution, DockControl gives our certified installers the ability to customize the functions of the remote to fit your specific needs. This has never been done before and we are very proud of the results."

Delivering "plug-and-play" connectivity with engine and thruster systems, Dockmate's wireless remote control allows users to remain in command of their boat's movement while away from the helm, often where visibility is limited. The DockControl software solution takes this innovation a step further by letting the installers adjust each function of the controller for optimal performance.

If a boat only has a single bow thruster, which is very common, the DockControl software can be programmed to safely "walk the boat" sideways directly towards the dock by programming the engine transmissions and throttle combined with the bow thruster – just as if the boat had a bow and stern thruster.

In addition, if the boat has two non-proportional bow and stern thrusters, which is also very common, one thruster is oftentimes more dominant than the other, resulting in greater difficulty with moving the boat sideways and parallel to the dock. DockControl has a solution for this scenario. The settings can be customized so that a slight press on the joystick only engages one thruster and a harder push engages both thrusters.

Engine control adjustments for the TWIST 3-axis joystick, such as delays and RPM levels, can be fine-tuned and adjusted as well.

For more information on DockControl or the complete lineup of Dockmate remote controls please visit www.dockmate.us.



Wireless Docking Controllers

Maneuvering your boat just got a lot easier

BY BOB ARRINGTON



The Yacht Controller Wireless POD Joystick Control for IPS Propulsion

MANY BOATERS are proud to master the skill of handling a vessel at sea. But nothing compares to the confidence boaters gain when they can steer a vessel in close quarters — or the fear felt when they cannot. Anxiety over docking or maneuvering a boat within the confines of a marina is quite common for both new and experienced boaters. The concern may be well founded. According to yacht insurers, boating accidents in marinas are a leading cause of insurance claims.

Evidence shows that distress over docking keeps some boaters from moving up to a larger boat. To address this issue, boat manufacturers introduced joystick controls to the market. Digital microprocessor technology, along with flexible thrust components, allow boaters to control their boat with previously unheard-of accuracy. Just move the joystick in the direction you want the boat to move and let the computer determine what to do with the props, thrusters or pod drives. This has not only increased handling confidence among boaters, but possibly boosted boat ownership.

Joystick docking is great if you're considering a new boat, but what if you

love your current boat and just want to dock it easily and with confidence? The answer may well be a wireless remote docking controller — essentially a portable joystick in your hand. What began years ago as a luxury accessory has become one of the most useful additions you could make to your boat.

When you can't see the stern and sides of the boat or must rely on your mate to tell where you are can create stress when docking. A wireless remote controller eliminates that tension by freeing the captain from the helm. Standing near the boat's edge when approaching a pier or near the boat's stern when backing into a



The Dockmate TWIST

slip bolsters docking confidence and accuracy. Wireless remote controllers are no longer just a convenient toy aboard high-end yachts. They now offer valuable assistance on any size boat.

FEATURES & BENEFITS

When shopping for a remote docking system, consider a few important features. A dependable communication link between the controller and boat is foremost. Look for products that use multiple band or alternating frequency transmissions. This technology uses more than one frequency or rapidly switches frequency between the remote controller and base station, thereby reducing interference or the risk of losing radio connection.

Controllers interface with the boat's existing control stations, as opposed to bypassing them. Through an electrical interface made specifically to match the boat's onboard systems, wireless remotes actually operate the boat's existing controls. This important feature relies on the boat's control systems and does not attempt to replace them.

Well-designed units have touch sensitive switching, which requires constant contact to activate any component. If the controller slips from your hand while maneuvering, all systems go into neutral. You must maintain contact with the switch to operate thrusters, propellers or anchor windlass. Hand-held units should also have an IP-certified waterproof rating and float, so they're easy to retrieve if they fall overboard.

Quality controllers allow simultaneous control of multiple items, allowing you to control a bow or stern thruster and the props at the same time. This also enables you to lift the anchor with the windlass while thrusting sideways to stay aligned with the anchor rode while retrieving. Some systems also have the ability to control Dynamic Positioning if installed on a boat.

Thoughtfully designed systems allow you to completely customize control settings and program switches to meet

your preferences. You might want to use bow and stern thrusters to pivot the boat with the joystick instead of forward and reverse on the engines, or you may want to select which way the anchor operates with the windlass control button arrows. In a customizable joystick, you can program the system to offer varying amounts of throttle with engine control. High-quality systems should not only offer remote control of the boat but improved control as well.

Controllers are powered by built-in lithium rechargeable or standard AA/AAA replaceable batteries, and they should have visual or audible warning indicators of battery failure. The systems are designed to place all props and thrusters into the neutral position when batteries fail.



Insurance companies are closely monitoring the use of remote wireless remote controls. As they grow more popular, we may see fewer insurance claims from collisions within a marina as a result of their use. It stands to reason, if you can see better while controlling the boat, you are less likely to hit something. Insurance companies may offer discounts if the data show that boaters are safer using wireless remotes.

Here's a handy guide to wireless remote control docking system makers:

Astel Marine Wireless Yacht Control System

astel-marine.com/products/wireless-yacht-control-systems

Dockmate

dockmate.us

Hydronautica RMC

hydronautica.nl/en/products/remote-motor-control-rmc

Xenta

xentas.com/case-studies/remote-control

Yacht Controller

yachtcontroller.com

REALISTIC EXPECTATIONS

A wireless remote controller will not make up for poor docking skills, so it's still important to practice and perfect your skills. For example, predicting what wind and current will do to the boat before entering a confined area, or being aware of what happens to the boat when you dock are important skills to master. The three most important benefits of wireless remote controllers are:

- Improve visibility from moving around the boat when maneuvering toward a pier or into a slip;
- Allow you to be on deck to help with lines and fenders while still controlling the boat;
- Help you gain a better view from the bow when anchoring or catching a mooring ball.

Wireless remote controllers are becoming popular, and advances in technology and increased competition are lowering the system's installed cost. Maybe it's time to get better control of your boat with a wireless remote docking system. [ml](http://marinelife.com/WirelessDocking)



To view this article online, visit marinelife.com/WirelessDocking

[Home](#) > [Products](#) > Dockmate Launches Groundbreaking DockControl Software Solution

PRODUCTS

Dockmate Launches Groundbreaking DockControl Software Solution

◆ Dockmate , Multihulls Magazine , Products

 **31**
VIEWS

Dockmate U.S., which offers advanced handheld wireless remote controls for boats, recently announced DockControl software for the ultimate in remote control customizability. Dockmate, when combined with the DockControl software solution, offers customers an off-the-shelf remote control solution that can be tailored to the real-world capabilities of their vessel and their own boating style.

DockControl gives the installer the ability to program the remote control by choosing any combination of engine(s) and thruster(s) activation(s). It allows for adjusting the sensitivity and behavior of the Dockmate TWIST joystick, choosing which functions are activated by each joystick direction and even adjust the size of the joystick's dead-zone to avoid accidental activation.

"Aftermarket remote controls offer unprecedented flexibility to boaters wanting a safer and easier maneuvering experience," said Brian Sheehan, Dockmate U.S. spokesperson. "The problem is that every boat performs just a little differently and every boater drives their boat in a different way. While other solutions force you to adapt your style to a one-size fits most solution, DockControl gives our certified installers the ability to customize the functions of the remote to fit your specific needs. This has never been done before and we are very proud of the results."

Delivering "plug-and-play" connectivity with engine and thruster systems, Dockmate's wireless remote control allows users to remain in command of their boat's movement while away from the helm, often where visibility is limited. The DockControl software solution takes ...

Thank for enjoying our content. Please [Subscribe](#) or "Login" using the form below to read the rest of this article.

Username

Password

CART

Get Even More

"Get all latest content delivered straight to your inbox."

 [Sign Up](#)

Don't worry we don't spam

- Advertisement -

Pier 7 Resort Marina, Edgewater, Maryland

Catamaran and Monohull Slips
Liveaboards Welcome
Haul Out Services for Catamarans
On-site Restaurant
Yoga Studio
Apartment Rentals
Boat Ramp, lifts and storage
Beach & Picnic area & More.



48 South River Road / Edgewater, MD 21037

[LEARN MORE >](#)

[piersevenmarina.com](#) [info@piersevenmarina.com](#) [1 \(410\) 956-2288](#)

LATEST POSTS

HOW TO MAKE COCONUT MACAROONS

IN THE GALLEY

Coconut Macaroons

 Carolyn Shearlock



MULTITECH MARINE

Factory Authorized
Catamaran Experts

Fountaine Pajot
Nautitech
Lagoon
Gemini

We provide repair and maintenance service for all types of catamarans.



Worry-Free Docking with Dockmate

No views • Oct 28, 2019

B

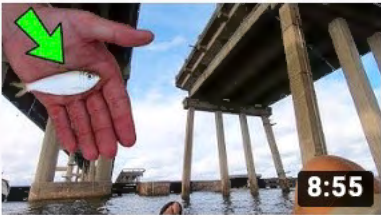
BrianLind

0 0 SHARE SAVE ...

SUBSCRIBE

On the fly video that I filmed at the Stuart, FL Trawlerfest. I used multiple cameras and a drone to capture this footage and was able to build a storyline in post production.

Up next AUTOPLAY



Using Live Bait For Epic Saltwater Fish Under Bridges
KyleForAwhile
1.9K views



How to Launch a Boat by Yourself

Dockmate

Dockmate is a pocket-sized wireless extension of a boat's engine controls that enables skippers to dock a boat single-handedly from anywhere on board. Developed by entrepreneur Dirk Illegems, whose hands-on approach to boating led him to develop an easy docking system for a broad spectrum of boats, the system can be installed on any boat or yacht with electronic engine controls, and UK agents Allboat Services of Plymouth can also fit it to any new boat when commissioned.

Dockmate provides wireless remote control of a boat's single or twin engines. It can control conventional shaft-driven engines, pod drives like IPS or Zeus, sterndrives and outboard-powered boats. It also provides control of the windlass so you can drop the hook while standing anywhere on the boat, use any thrusters that may be fitted and sound the horn. It provides total fingertip control of a boat's movement without compromising on the responsiveness of its engines.

Dockmate comes in three formats: Dockmate Single, Dockmate Twin and Dockmate Twist. Dockmate Single simply works the gearbox, bow and stern thrusters, and the windlass and horn if needed. Twin works in the same manner, but with two engines to control. Twist is by far the most interesting as it gives proportional propulsion control of any set-up, be it single/twin shaft drives, sterndrives, outboards or pod drives. It can also control thrusters, including proportional thrusters, and has the ability to steer/vector sterndrives, outboards and pod drives - in effect, a portable joystick.

Connection for both the single and twin systems comes in three methods: analogue for older boats without digital control; digital via CAN bus technology - effectively tapping into the boat's electronics; and a direct connection to the gearbox solenoid, through a specially developed interface. This last method has been developed to bypass the boat's CAN bus system, avoiding any possible protocol incompatibility problems that could void a manufacturer's warranty. Connection for

Dockmate Twist uses the same methods, though electronic control of electronic throttles would have to be through the boat's digital CAN bus system. The receiver for the system, which measures around 10in square by 2in deep, is sufficiently compact to fit behind most dashboards and will pick up the remote control from 50m away. The actual remote is designed to have the effect of a 'dead man's switch' inasmuch as if you drop it, the lack of fingertip pressure/control on the remote disengages the transmission of whatever engine was in gear, or whatever thruster was spinning. This makes good sense as although the remote comes with a lanyard, losing it over the side when standing on the side deck while berthing could be an expensive slip-up.

So far there have been quite a few retrofits to boats ranging from a fairly new outboard-powered Axopar 37 to an older shaft-driven Princess 460, so this system has been developed for craft both old and new. However, I suspect that the cost of retrofitting to older analogue boats will be higher than tapping into modern CAN bus electronics.

The cost starts at around £6,000 and goes up to £8,400 for the Dockmate Twist.



1: The Dockmate Twist remote is a mini remote joystick control.

2: With the compact remote you can take the helm controls with you.

3: Digital or analogue, you get wireless connection to your controls.

HOME > EQUIPMENT > DOCKMATE



EQUIPMENT October 22, 2019 Camelot Montgomery-Swan 0

Dockmate

7

MORE ▾



Dockmate is a pocket-sized wireless extension of a boat’s engine controls that enables skippers to dock a boat single-handedly from anywhere on board. Developed by entrepreneur Dirk Illegems, whose hands-on approach to boating led him to develop an easy docking system for a broad spectrum of boats, the system can be installed on any boat or yacht with electronic engine controls, and UK agents Allboat Services of Plymouth can also fit it to any new boat when commissioned.

Dockmate provides wireless remote control of a boat’s single or twin engines. It can control conventional shaft-driven engines, pod drives like IPS or Zeus, sterndrives and outboard-powered boats. It also provides control of the windlass so you can drop the hook while standing anywhere on the boat, use any thrusters that may be fitted and sound the horn. It provides total fingertip control of a boat’s movement without compromising on the responsiveness of its engines.

Search ...

FOLLOW US

f

13,859

t

1,849

YouTube

0



ADVERTISEMENT



Dockmate comes in three formats: Dockmate Single, Dockmate Twin and Dockmate Twist. Dockmate Single simply works the gearbox, bow and stern thrusters, and the windlass and horn if needed. Twin works in the same manner, but with two engines to control. Twist is by far the most interesting as it gives proportional propulsion control of any set-up, be it single/twin shaft drives, sterndrives, outboards or pod drives. It can also control thrusters, including proportional thrusters, and has the ability to steer/vector sterndrives, outboards and pod drives - in effect, a portable joystick.

Connection for both the single and twin systems comes in three methods: analogue for older boats without digital control; digital via CAN bus technology – effectively tapping into the boat’s electronics; and a direct connection to the gearbox solenoid, through a specially developed interface. This last method has been developed to bypass the boat’s CAN bus system, avoiding any possible protocol incompatibility problems that could void a manufacturer’s warranty. Connection for Dockmate Twist uses the same methods, though electronic control of electronic throttles would have to be through the boat’s digital CAN bus system. The receiver for the system, which measures around 10in square by 2in deep, is sufficiently compact to fit behind most dashboards and will pick up the remote control from 50m away. The actual remote is designed to have the effect of a ‘dead man’s switch’ inasmuch as if you drop it, the lack of fingertip pressure/control on the remote disengages the transmission of whatever engine was in gear, or whatever thruster was spinning. This makes good sense as although the remote comes with a lanyard, losing it over the side when standing on the side deck while berthing could be an expensive slip-up.

So far there have been quite a few retrofits to boats ranging from a fairly new outboard-powered Axopar 37 to an older shaft-driven Princess 460, so this system has been developed for craft both old and new. However, I suspect that the cost of retrofitting to older analogue boats will be higher than tapping into modern CAN bus electronics.

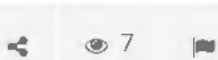
The cost starts at around £6,000 and goes up to £8,400 for the Dockmate Twist.

Contact

www.dockmatedirect.com

(8)

TAGS: DOCKING DOCKMATE



PREVIOUS
Whisper Quiet DC Power

NEXT
Super-compact High-power Pocket Light



CAMELOT MONTGOMERY-SWAN

RELATED POSTS



ADVANCED
PROFESSIONAL,
COMMERCIAL &
LEISURE RIBS

Join us in 2018 and receive
a **£250** fuel voucher

SAFETY

WARNING
ATTACH YOUR
KILLCORD

TEST KILLCORD | ATTACH AROUND LEG
SUPPLIED BY PONTBOATRIB MAGAZINE

BE SAFE
ORDER
YOUR
FREE
KILL-
CORD
STICKER
NOW!