



Andrew Golden  
Principal  
Rushton Gregory Communications  
617-413-6521  
[agolden@rushtongregory.com](mailto:agolden@rushtongregory.com)

**FOR IMMEDIATE RELEASE:**  
*September 25, 2019*

## **DOCKMATE® LAUNCHES GROUNDBREAKING DOCKCONTROL SOFTWARE SOLUTION**

US-based Seller of Wireless Remote Controls Offers Certified Installers Unprecedented Customization Capabilities

**Fort Lauderdale, Fla.** – Dockmate® U.S., which offers advanced handheld wireless remote controls for boats, announced today DockControl software for the ultimate in remote control customizability. Dockmate when combined with the DockControl software solution offers customers an off-the-shelf remote control solution that can be tailored to the real-world capabilities of their vessel and their own boating style.

DockControl gives the installer the ability to program the remote control by choosing any combination of engine(s) and thruster(s) activation(s). It allows for adjusting the sensitivity and behavior of the Dockmate TWIST joystick, choosing which functions are activated by each joystick direction and even adjust the size of the joystick's dead-zone to avoid accidental activation.

"Aftermarket remote controls offer unprecedented flexibility to boaters wanting a safer and easier maneuvering experience," said Brian Sheehan, Dockmate U.S. spokesperson. "The problem is that every boat performs just a little differently and every boater drives their boat in a different way. While other solutions force you to adapt your style to a one-size fits most solution, DockControl gives our certified installers the ability to customize the functions of the remote to fit your specific needs. This has never been done before and we are very proud of the results."

Delivering "plug-and-play" connectivity with engine and thruster systems, Dockmate's wireless remote control allows users to remain in command of their boat's movement while away from the helm, often where visibility is limited. The DockControl software solution takes this innovation a step further by letting the installers adjust each function of the controller for optimal performance.

If a boat only has a single bow thruster, which is very common, the DockControl software can be programmed to safely "walk the boat" sideways directly towards the dock by programming the engine transmissions and throttle combined with the bow thruster – just as if the boat had a bow and stern thruster.

# DOCKMATE® LAUNCHES GROUNDBREAKING DOCKCONTROL SOFTWARE SOLUTION

## PAGE 2

In addition, if the boat has two non-proportional bow and stern thrusters, which is also very common, one thruster is oftentimes more dominant than the other, resulting in greater difficulty with moving the boat sideways and parallel to the dock. DockControl has a solution for this scenario. The settings can be customized so that a slight press on the joystick only engages one thruster and a harder push engages both thrusters.

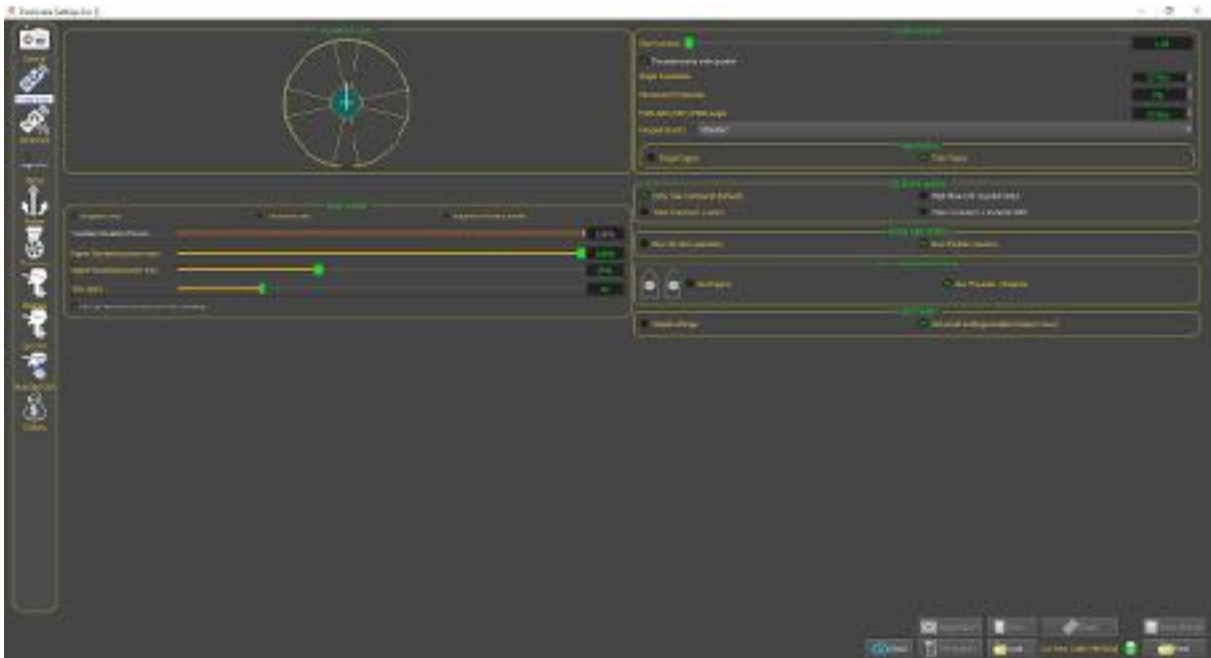
Engine control adjustments for the TWIST 3-axis joystick, such as delays and RPM levels, can be fine-tuned and adjusted as well.

For more information on DockControl or the complete lineup of Dockmate remote controls please visit [www.dockmate.us](http://www.dockmate.us).

-30-

### About Dockmate:

Based in Fort Lauderdale, Florida, Dockmate® offers the latest in advanced, yet very affordable wireless remote-control technology. Highly-reliable and intuitive, the Dockmate SINGLE, TWIN, TWIST and TWIST for Volvo IPS and other POD systems allow every skipper to dock a boat singlehanded, offering the ability to leave the helm and get a closer look at the surroundings in marinas and other tight quarters, while still in complete control of the boat's movement.



*For hi-res images, as well as additional editorial requests, please contact:*

**Andrew Golden**  
**Rushton Gregory Communications**  
[agolden@rushtongregory.com](mailto:agolden@rushtongregory.com)